

FORCEPS

Tissue Forceps

Gillis Tissue Forceps 1x2 teeth

Ref	Teeth
551240	0.50 mm
551241	0.40 mm
551242	0.30 mm



Moorfields Forceps

Ref	Overall length
551235	110 mm

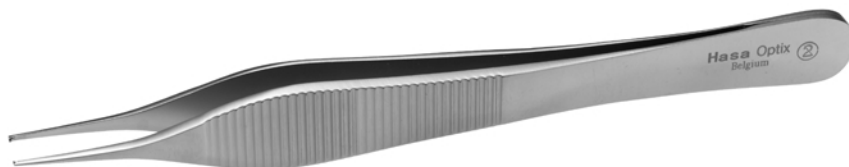


Adsons Forceps

Straight shafts without platforms - Swallow-tail handle

0.40 mm, 1x2 teeth

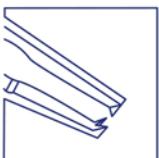
Ref	Overall length
551120	125 mm



Curved Fixation Toothed Forceps with lock Curved shafts without platforms - Flat handle

0.50 mm - 1x2 teeth

Ref	Overall length
551117	118mm



Locked Forceps With Lock 1 x 2 teeth 0.5 mm - Angled

Overall length : 110 mm

Ref	
551227	Left
551228	Right

